



DENALI Plow Mount MA11767 CF Moto Z-Force

Thank you for purchasing our DENALI plow mount. You now own a premium custom plow mount to allow you to use your plow with your SxS. Please note the following instructions and heed all warnings.

- Your UTV/SxS and/or plow system can cause death or injury, please use caution and common sense when operating your unit.
- Read your Plow Operator Manual, your Winch Operator Manual, and all warning labels before operating your UTV/SxS.
- Operate your UTV/SxS at a walking speed with the blade installed. Do not exceed 5 mph (8 km/h), even with the blade up.
- Do not operate the UTV/SxS on slopes greater than 10 degrees with the plow installed.
- Always lower the plow to the down position before leaving your UTV/SxS unattended.

SEVERE INJURY OR DEATH MAY RESULT IF YOU ARE NEGLIGENT

Please verify that all hardware and parts are included in your package.

Kit Contents:

Item Number	Quantity	Part Number
1	1	MA11767 Main Mounting Plate
2	4	3/8" -16 x 1.5" ID Ubolt (for 1" pipe)
3	4	3/8"-16 Serrated Flange Nut

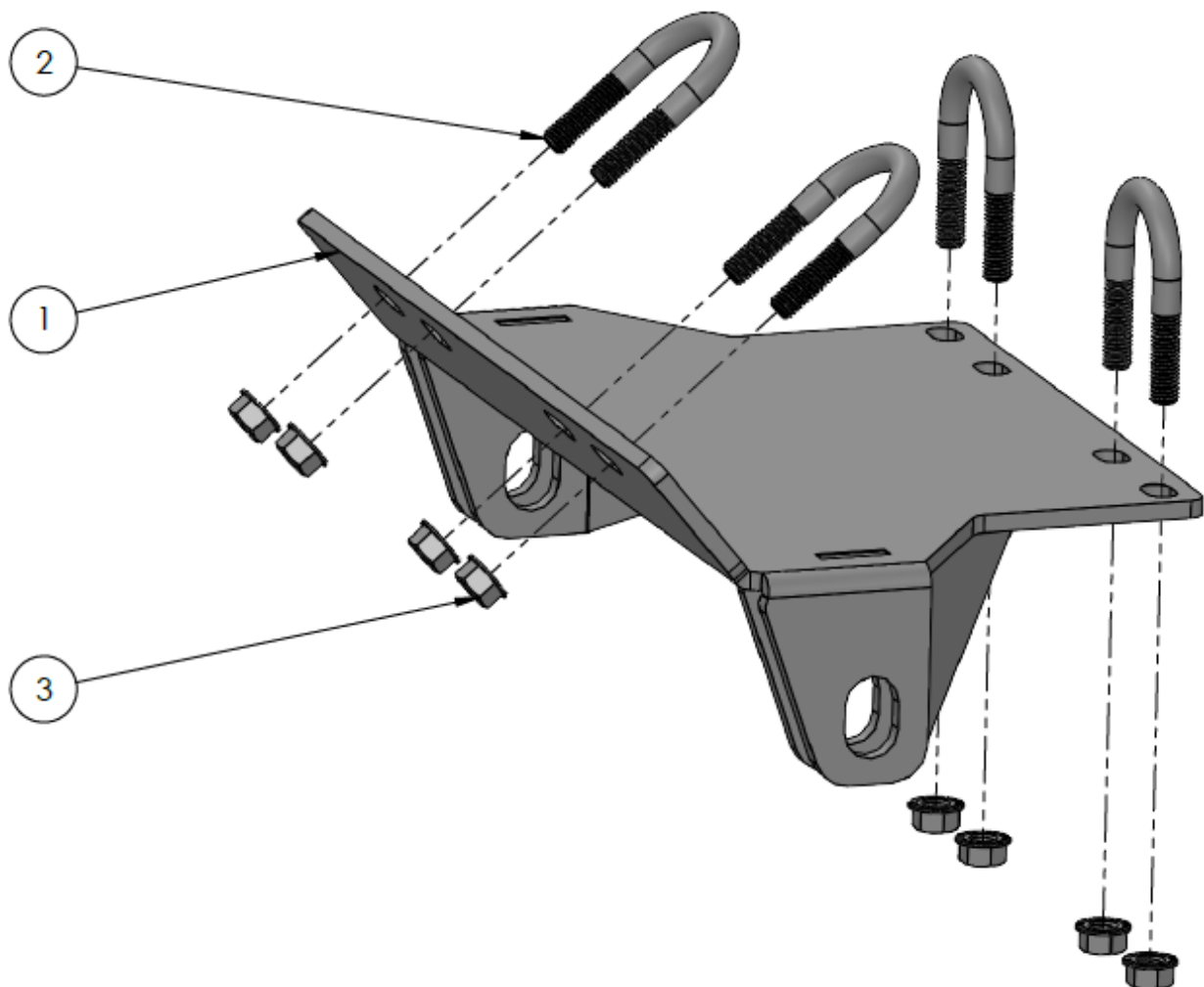


Figure 1

CF Moto Z-Force Installation Instructions

1. Lift the MA11767 Mounting Plate into place under the front bumper as shown in Figure 2.



Figure 2

2. Hang two of the 3/8"-16 x 1.5" ID U-bolts over the vertical bumper tubes and push them through the front of the MA11767 Main Mounting Plate as shown in Figures 2 and 3.

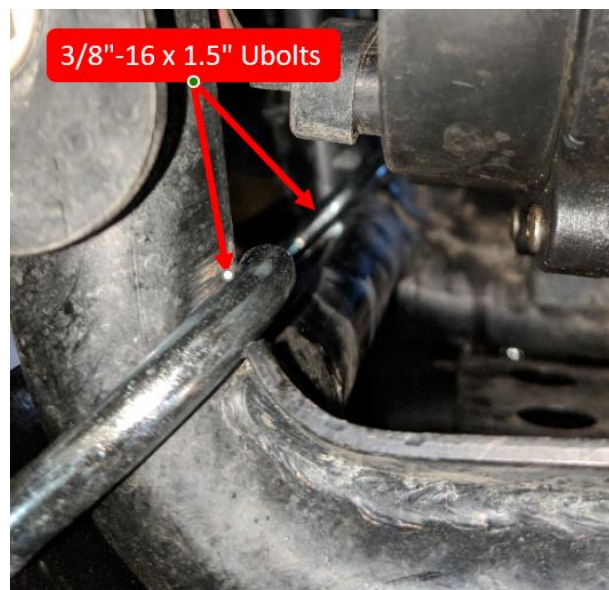


Figure 3

3. Secure with 3/8"-16 Serrated Flange Nuts but do not tighten at this time.
4. Lift the back of the MA11767 Main Mounting Plate into place and secure with 3/8"-16 x 1.5" ID U-bolts and 3/8"-16 Serrated Flange Nuts as shown in Figure 4.

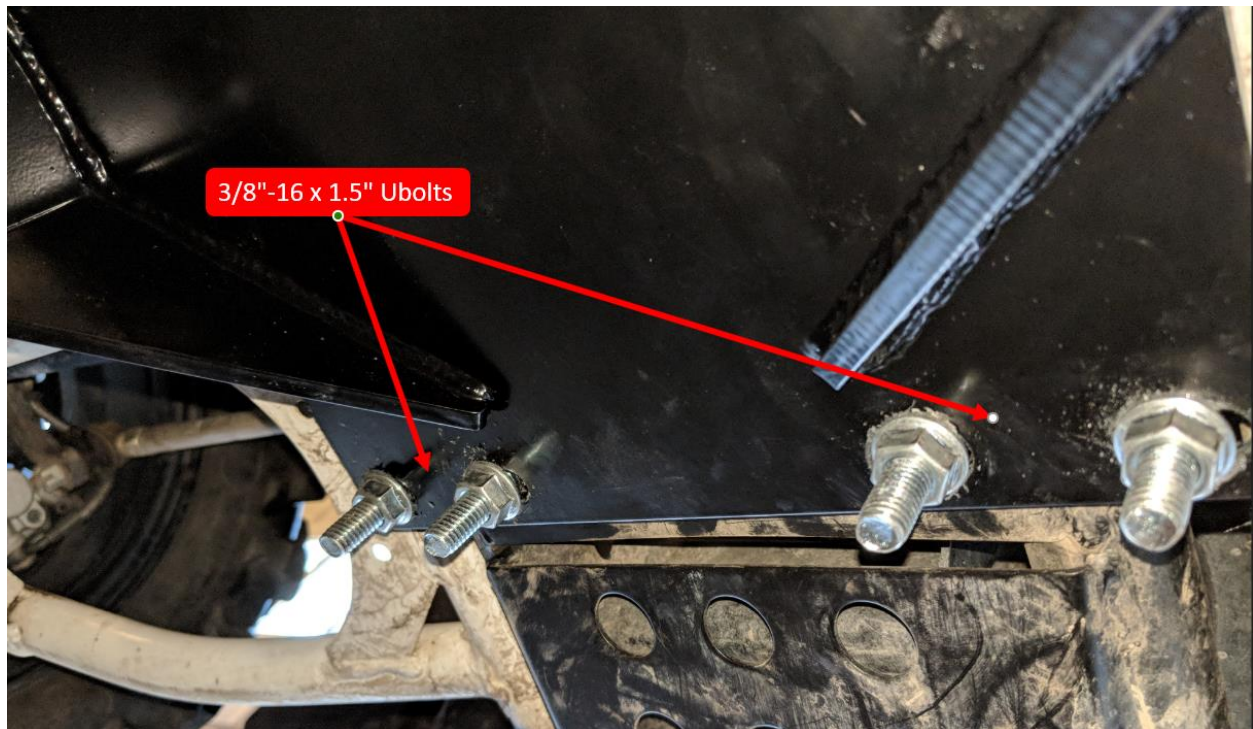


Figure 4

5. Verify the mount is square and tighten down all hardware.
6. Attach the plow using the quick release pins included with DENALI Plow Kits.
7. After the first use of your plow, check and retighten all hardware at least once, in case your frame has flexed and the Plow Mount has loosened